

Synergy Telecom P Ltd.

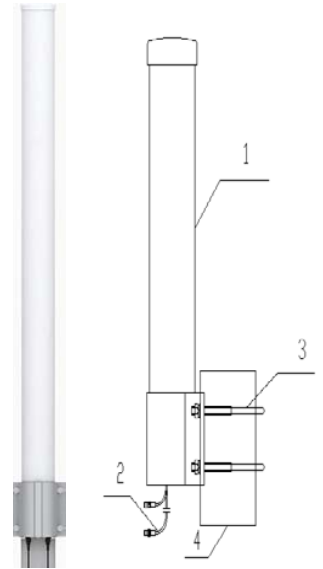
Omni Directional Antenna (TW 2.4 / MIMO / OMNI/12 dbi / 01

APPLICATION:

- 2.4 GHz ISM Band
- IEEE 802.11b/g Wireless LAN
- Bluetooth®
- Public Wireless Hotspot Wifi
- Wireless Video Systems
- Multipoint and Mobile Applications -

• Features:

- Superior performance
- Lightweight fiberglass radome
- All weather operation
- Heavy-duty steel mounting brackets
- Integral N-Female connector



PARAMETER	SPECIFICATION
Model	TW./2.4 /MIMO OMNI 12 DBI.01
Freq. Range	MHz 2400 to 2500
Gain	12 dBi
Ho .Beam width	360°
Ver. Beam width	7°
VSWR	≤1.8
Isolation-dB	≥28
Max. power	W 50
Impedance	50 Ω
Polarization	Vertical and Horizontal
Connector	2 x N Female
Weight-	2.5 kg
Dimensions	Φ100 mm× L =1150 mm
Rated wind velocity	60 (m/s)
Mounting	Pole
Mast Diameter	Φ50 to Φ80 mm

WZ-47 BUDHELLA VILLAGE, VIKASPURI, NEW DELHI – 110018
PHONE: 011-28533349, MOB: 9810138894/9212558066, FAX: 011-28533349
EMAIL: info@rfconnector.in, WEBSITE: <http://rfconnector.in/>