

SYNERGY TELECOM P. LTD.

HELICAL RHCP / LHCP ANTENNA

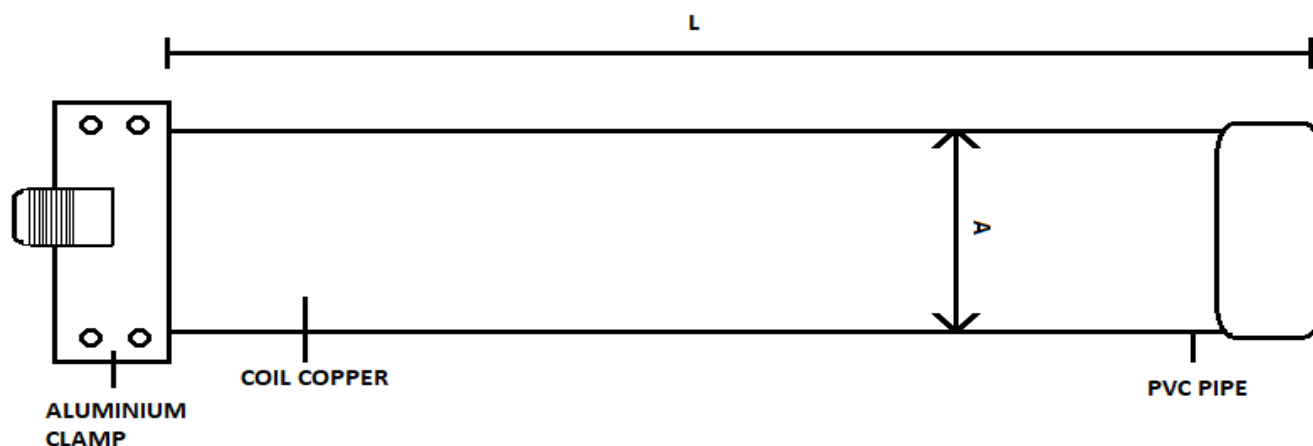
1160 - 1280 MHz 10 - 12 dbi Gain

General:

These SCH series Helical Antennas are light weight, Broadband and Rugged Helical Antennas , supplied with stainless steel mounting hardware.

For wide bandwidth operation with a low SWR, the matching section uses a rigid coaxial feed with helical antenna termination , N-Female, mounted at the end for easy antenna feed connectivity.

The antenna is designed to operate at D.C. ground.



ELECTRICAL DATA

Frequency Range (MHz)	1160 - 1280
Gain (dBi)	10 - 12 dbi
Bandwidth (MHz.)	120
Polarization	LHCP/RHCP.
Input Impedance (Ohms)	50
Beamwidth 3db (Degrees)	50
Front to Back Ratio	18
VSWR	1.5:1
Input Termination	N-Female
RF Power Handling Capacity (Watts)	200

MECHANICAL DATA

Materials	PVC
Mounting HW	Stainless
Weight (Kg)	2 Kg
Wind Rating (KMPH)	180
Radiating Material	Copper
Overall Length	580mm
Maximum Mount Pipe Diameter	100 mm

Please Note: 1. Specifications are subject to change without any notice.
2. Customized in-band and out of band versions are available on request.

WZ-47 BUDDEHLLA VILLAGE, VIKAS PURI, NEW DELHI-110018
PHONE:- 011-28533349, MOB;-9810138894/9212558066, FAX:-01128533349
EMAIL:- info@synergytpl.com WEBSITE:- <http://rfconnector.in>