

SYNERGY TELECOM P. LTD.

HELICAL RHCP / LHCP ANTENNA

2400-2500 MHz

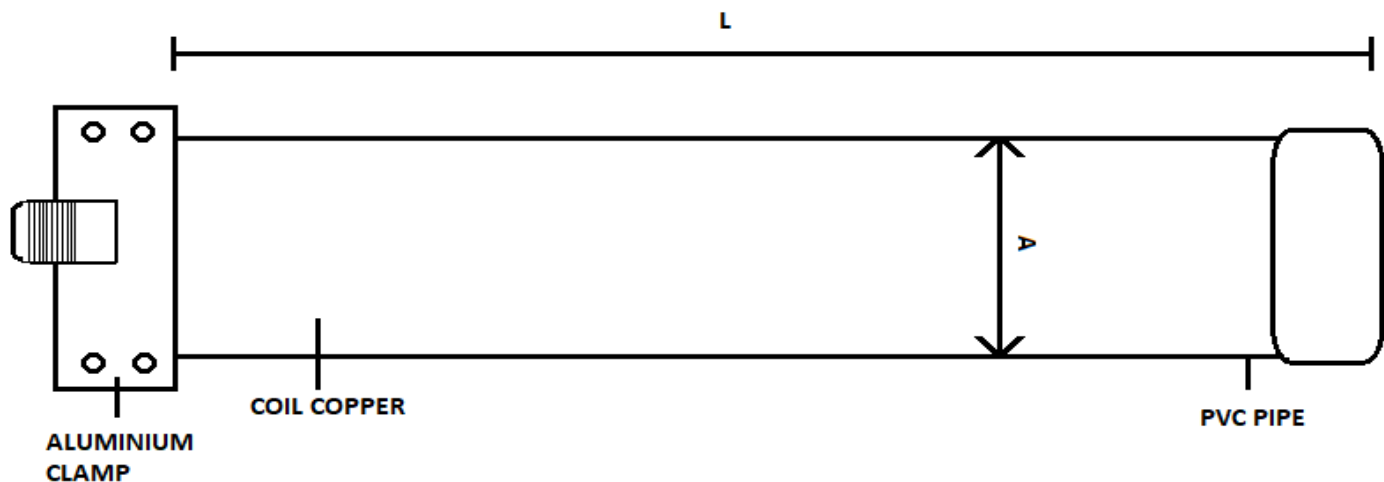
10 - 12 dbi Gain

General:

These SCH series Helical Antennas are light weight, Broadband and Rugged Helical Antennas , supplied with stainless steel mounting hardware.

For wide bandwidth operation with a low SWR, the matching section uses a rigid coaxial feed with helical antenna termination , N-Female, mounted at the end for easy antenna feed connectivity.

The antenna is designed to operate at D.C. ground.



ELECTRICAL DATA

Frequency Range (MHz)	2400-2500
Gain (dBi)	10 - 12 dbi
Bandwidth (MHz.)	100
Polarization	LHCP/RHCP.
Input Impedance (Ohms)	50
Beamwidth 3db (Degrees)	50
Front to Back Ratio	18
VSWR	1.5:1
Input Termination	N-Female
RF Power Handling Capacity (Watts)	200

MECHANICAL DATA

Materials	PVC
Mounting HW	Stainless
Weight (Kg)	0.5kg
Wind Rating (KMPH)	180
Radiating Material	Copper
Radome Material	Copper
Overall Length	350 mm
Maximum Mount Pipe Diameter	38 mm

- Please Note:**
1. Specifications are subject to change without any notice.
 2. Customized in-band and out of band versions are available on request.

WZ-47 BUDDEHLLA VILLAGE, VIKAS PURI, NEW DELHI-110018
PHONE:- 011-28533349, MOB;-9810138894/9212558066, FAX:-01128533349
EMAIL:- info@synergyppl.com WEBSITE:- <http://rfconnector.in>