

# SYNERGY TELECOM P. LTD.

## HELICAL RHCP / LHCP ANTENNA

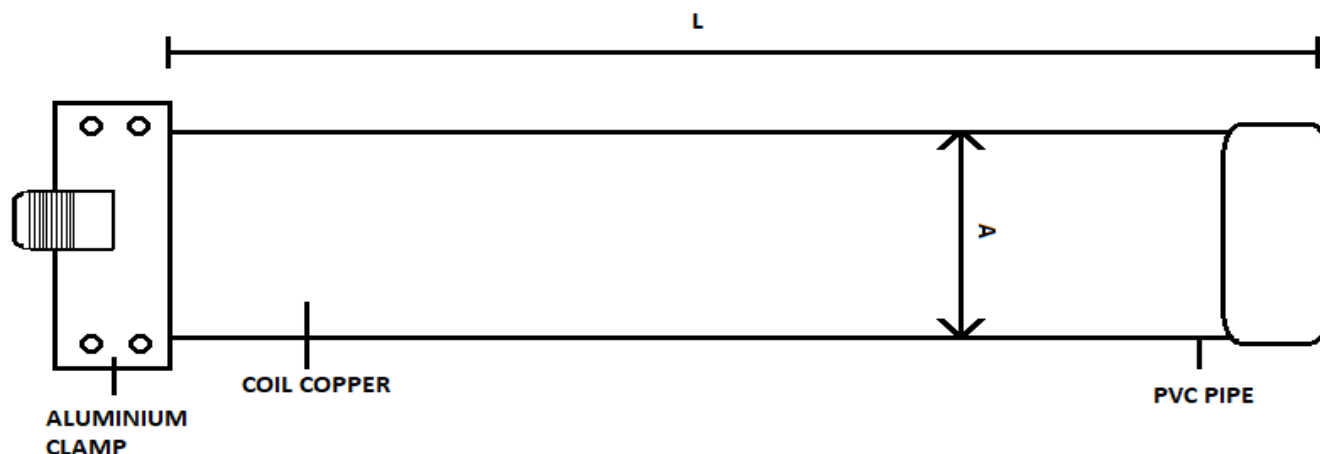
430 - 435 MHz    10 - 12 dBi Gain

### General:

These SCH series Helical Antennas are light weight, Broadband and Rugged Helical Antennas , supplied with stainless steel mounting hardware.

For wide bandwidth operation with a low SWR, the matching section uses a rigid coaxial feed with helical antenna termination , N-Female, mounted at the end for easy antenna feed connectivity.

**The antenna is designed to operate at D.C. ground.**



### ELECTRICAL DATA

|                                    |             |
|------------------------------------|-------------|
| Frequency Range (MHz)              | 430 - 435   |
| Gain (dBi)                         | 10 - 12 dBi |
| Bandwidth (MHz.)                   | 5           |
| Polarization                       | LHCP/RHCP.  |
| Input Impedance (Ohms)             | 50          |
| Beamwidth 3db (Degrees)            | 50          |
| Front to Back Ratio                | 18          |
| VSWR                               | 1.5:1       |
| Input Termination                  | N-Female    |
| RF Power Handling Capacity (Watts) | 200         |

### MECHANICAL DATA

|                             |           |
|-----------------------------|-----------|
| Materials                   | PVC       |
| Mounting HW                 | Stainless |
| Weight (Kg)                 | 2.3 Kg    |
| Wind Rating (KMPH)          | 180       |
| Radiating Material          | Copper    |
| Overall Length              | 1000 mm   |
| Maximum Mount Pipe Diameter | 230 mm    |

- Please Note:**
1. Specifications are subject to change without any notice.
  2. Customized in-band and out of band versions are available on request.

WZ-47 BUDDEHLLA VILLAGE, VIKAS PURI, NEW DELHI-110018  
PHONE:- 011-28533349, MOB:-9810138894/9212558066, FAX:-01128533349  
EMAIL:- [info@synergytpl.com](mailto:info@synergytpl.com) WEBSITE:- <http://rfconnector.in>