

SAT-20C

Cable/pipe Locator

SYNERGY TELECOM PVT LTD



Using advanced testing technology and component

- ◎ The application of using multi-coil electromagnetic technology improves the accuracy of pipe locating pipeline depth measuring and objectives pipe recognition ability
- ◎ Use of advanced signal processing technology and the latest integrated circuit components

Meeting different measurement frequencies

- ◎ Users can choose from 480Hz、31KHz frequencies according to the actual situation
- ◎ Users also can customize measurement frequencies for special requirement (must stated in the order)

Different mode and function to improve test efficiency

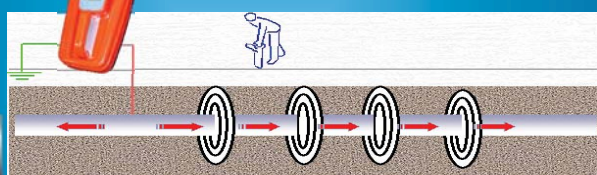
- ◎ Peak mode: positioning route by measuring the max value of the signal
- ◎ Valley mode: positioning route by measuring the minimum value of the signal
- ◎ Route orientation: quickly and intuitively determine the route direction
- ◎ Current measurement (CM): detect the target pipeline by measuring the signal of the current
- ◎ Stethoscope: identify the loaded pipeline by auscultating

Real-time testing of battery

- © It will alarm and automatically shut down when battery power is lower than the protection value

A variety of measuring signals transmit mode

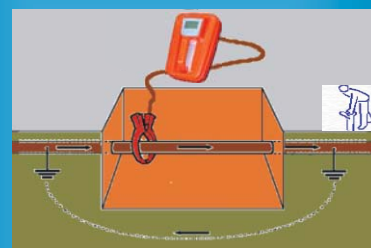
- © Injection: injection point for a pipeline



- © Induction: for no injection point and can not use the clamp when the pipeline



- © Clamp: exposed for a period of pipeline under test, easy to clamp the pipe clamp



Specification

Transmitter index

- © Signal frequency:
 - Injection :480Hz、31KHz
 - Induction :31KHz
 - Clamps :31KHz
- © Output voltage : 0-400Vp-p according to insulation variance
- © Output waveform : sine wave
- © Power supply : 12VDC 4.5AH Ni-NH Battery
- © Maximum output power :10W

Ambient enviroment

- © Operating temperature: -20℃~+50℃
- © Storage temperature: -40℃-70℃
- © Humidity: 10%~90% (non condensing)
- © Atmospheric pressure: 86~106KPa
- © Ambient noise: ≤60dB

Receiver parameters

- © Power consumption: <1.0W
- © Power supply: 12V DC 1.8 AH Ni-NH Battery
- © Maximum depth: 4.5meter (normally)
- © Depth measurement error: $\pm 0.05h \pm 5\text{cm}$ (h means the depth of pipeline)
- © Route error: $\leq 5\text{cm}$
- © test pipeline routing and effective length
 - Injecting: at least 10Km (normally);
 - Clamp: at least 6Km (normally);
 - Induction: at least 3Km (normally);

Note: normal condition means there is no insulation faults and other distractions when testing.

Physical property

Name	Weight(Kg)	Overall dimension(mm)
Transmitter	3.4	348×239×175
Receiver	2.6	648×260×130
Overall(Gross Weight)	14	790×250×420