

GC724A

Cable and Antenna Analyzer



- The economical solution
- Ideal for field testing
 - Cell site certification
 - Solving service problems
- Lightweight and easy-to-use

Key measurements

- VSWR (Return Loss)
- Distance to fault
- Cable loss
- Power (average and peak)

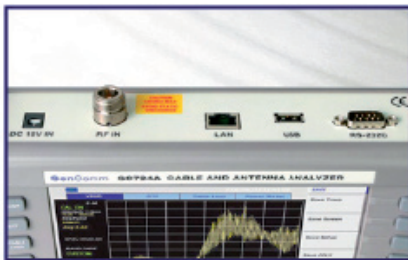
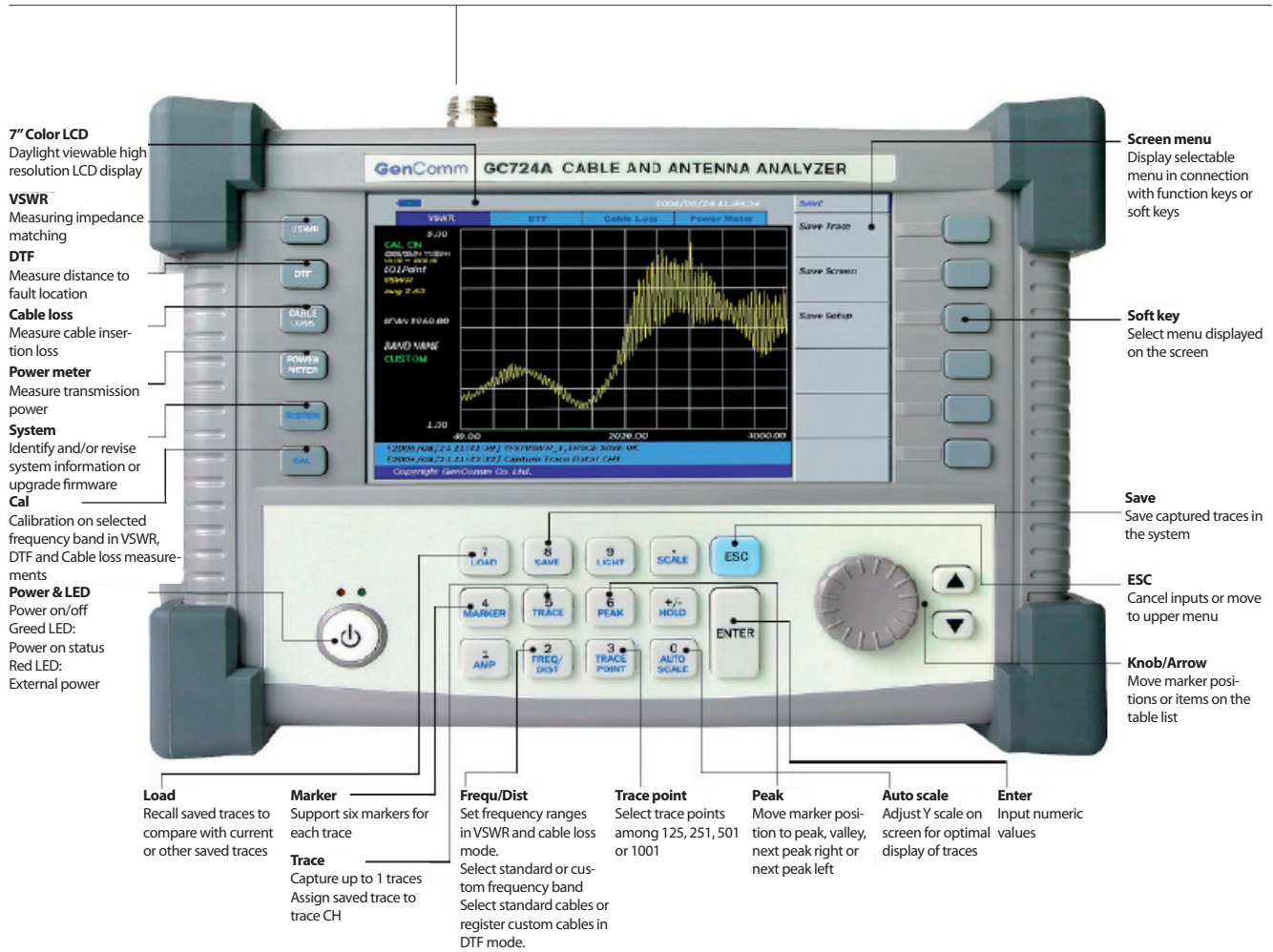
Features

- A portable lightweight instrument <2.5 kg (5.5 lbs)
- Handheld operation
- Pre-loaded frequency channels and cable characteristics
- 7 inch TFT color display (viewable in daylight)
- Easy front panel touch screen operation
- Superior immunity to RF interference
- Up to 1001 data points to locate long range problems
- External USB memory
- 6 markers
- Saves up to 20 user setups
- Application software for data management
- Saves up to 400 measurement traces
- Saves up to 100 measurement screens
- Alphanumeric labeling of saved measurements
- Automatic time/date stamp of saved data
- Rechargeable field replaceable lithium-ion battery

General Overview

A large number of abnormal cell site problems are typically caused by the antenna system, cable and connectors, or both. It is important to have the right instrument available when either servicing or certifying cell sites for operation. The GC724A cable and antenna analyzer is the lightweight portable diagnostic tool needed to accurately detect operational problems. The GC724A has all of the measurement functions necessary to accurately verify the site's antenna system from VSWR to power measurements. In addition, the GC724A makes distance-to-fault measurements to accurately pinpoint the fault's location. Touch screen operation and a 7 inch wide TFT color display allows measurements to be easily made and displayed on the GC724A. Its application specific software allows for the user to easily compare and analyze measurements and generate professional reports. A rechargeable and field installable lithium-ion battery for operating longer than three hours will help improve productivity.





Top: Signal in/out and external interface ports



Rear: Rugged and convenient design for field applications



Side: Field replaceable battery on the right side and hand strap on the left side

Specifications

General specifications

Max. input power	+25 dBm
Frequency accuracy	± 75 ppm
Frequency resolution	100 kHz
Impedance	50 Ω
Test port	N female
Test curve storage	Up to 400
Screen storage	up to 100
Setup storage	up to 20

VSWR specifications

Frequency range	40~4000 MHz
Number of data points	126, 251, 501, 1001
Return loss	Range: 0 ~ 60 dB
VSWR range	1 ~ 65
Scan speed	1, 2, 3, 5, 7 s for each data point

Cable loss specifications

Frequency range	40 ~ 4000 MHz
Cable loss range	0 ~ 30 dB

DTF specifications

Distance	Range: 0 ~ 1250 m (4125 ft)
Resolution	Distance/450 (m/ft)
Return loss	Range: 0 ~ 60 dB
VSWR	Range: 1 ~ 65

Immunity to interfering signals

On frequency	+10 dBm
On channel	+20 dBm

RF power meter (option)

Sensor type		Average, peak
Average power sensor	Frequency range	20 ~ 3000 MHz
	Dynamic range	0 ~ 30 dBm
Peak power sensor	Frequency range	20 ~ 4000 MHz
	Dynamic range	0 ~ 40 dBm
Accuracy		± 10%
Test port		Precision N female

Miscellaneous

Dimension	260 x 190 x 60 mm (10.2" x 7.5" x 2.4")
Weight	<2.5 kg (<5.5 lbs) includes battery
Battery	Li-Ion (>3 hr operating time after full charging)

Environmental conditions

Operating temperature	0 ~ +50 °C (+32 ~ +122 °F)
Storage temperature	-40 ~ +80 °C (-40 ~ +176 °F)
Humidity	95% no condensation

Ordering Information

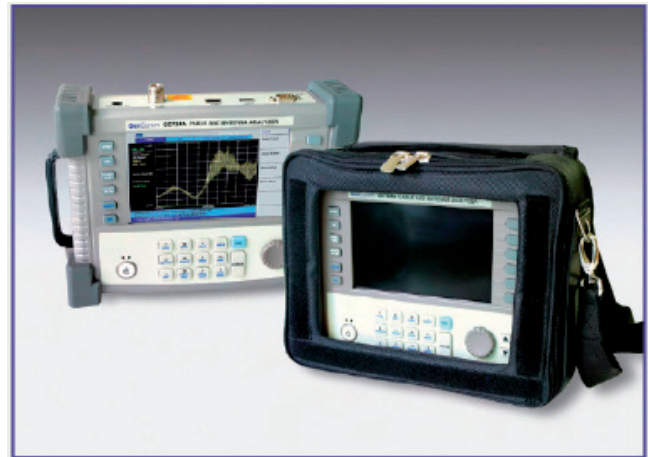
GC724A	Cable and Antenna Analyzer
--------	----------------------------

Supplied accessories

GC72450541	Soft carrying case
GC72450522	AC-DC adapter
GC72450514	Serial interface cable
GC72450513	128 MByte USB memory
GC72450523	CD car adapter
GC72450521	Li-Ion battery (built-in)
	User's manual
	Quick reference guide
	Application software (CD ROM)

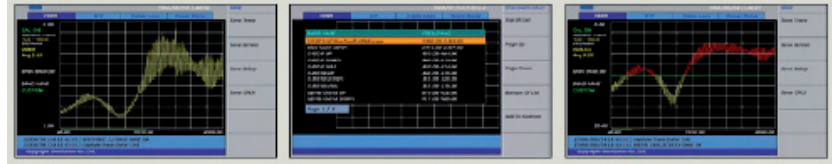
Optional accessories

GC72450509	Calibration kit, 40 dB, 4 GHz (open short load)
GC72450531	RF reference cable, 1.5 m, N(m)-N(f)
GC72450532	RF reference cable, 3.0 m N(m)-N(f)
GC72450551	Average power sensor, 20 MHz ~ 3.0 GHz, 0 ~ 3.0 dBm
GC72450552	Peak power sensor, 20 MHz ~ 4.0 GHz, 0 ~ 40 dBm
GC72450542	Hard case



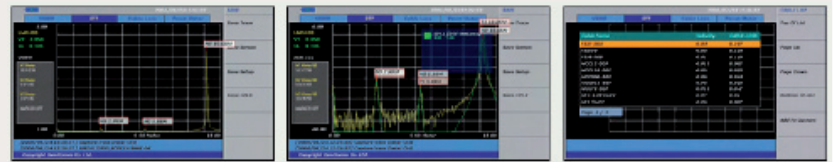
Main function: VSWR tester

- Frequency range: 40 MHz ~ 4 GHz
- Dynamic range: 60 dB
- 1001 high resolution mode
- Built-in over 80 world-wide signal standards
- Register user defined bands in custom band
- Alarm limit line



Main function: DTF analyzer

- Distance: Up to 1,250 m
- Resolution: Distance/450
- Dynamic: 60 dB
- Built-in over 95 standard cable characteristics
- Register user defined cables to custom cable



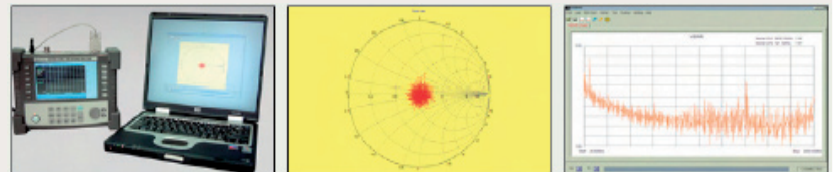
Main function: Power meter

- Plug and Play type power sensors
- Sensor type
 - Average power sensor
 - Peak power sensor



Main function: Application software

- Support Smith chart
- VSWR-DTF conversion
- Load, save and transform file formats
- Register or edit user defined band to custom bands
- Register or edit user defined cables to custom cable list
- Edit charts
- Generate and print reports



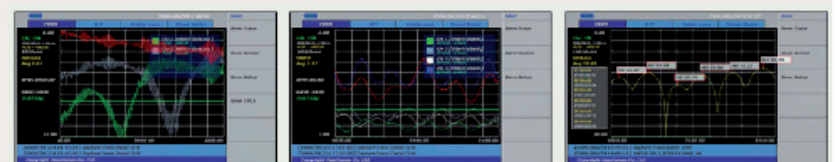
Main function: One port cable loss

- Dynamic range: 0 ~ 30 dB
- Alarm limit line



Supplementary functions

- Capture up to 4 traces
- Overlay up to 4 traces in one screen
- Support up to 6 markers simultaneously



All statements, technical information and recommendations related to the products herein are based upon information believed to be reliable or accurate. However, the accuracy or completeness thereof is not guaranteed, and no responsibility is assumed for any inaccuracies. The user assumes all risks and liability whatsoever in connection with the use of a product or its applications. JDSU reserves the right to change at any time without notice the design, specifications, function, fit or form of its products described herein, including withdrawal at any time of a product offered for sale herein. JDSU makes no representations that the products herein are free from any intellectual property claims of others. Please contact JDSU for more information. JDSU and the JDSU logo are trademarks of JDS Uniphase Corporation. Other trademarks are the property of their respective holders. © 2007 JDS Uniphase Corporation. All rights reserved. 30149153 001 0707 GC724A.DS.CPO.TM.AE

Test & Measurement Regional Sales

NORTH AMERICA TEL: 1 866 228 3762 FAX: +1 301 353 9216	LATIN AMERICA TEL: +55 11 5503 3800 FAX: +55 11 5505 1598	ASIA PACIFIC TEL: +852 2892 0990 FAX: +852 2892 0770	EMEA TEL: +49 7121 86 2222 FAX: +49 7121 86 1222	WEBSITE: www.jdsu.com
---	--	---	---	--