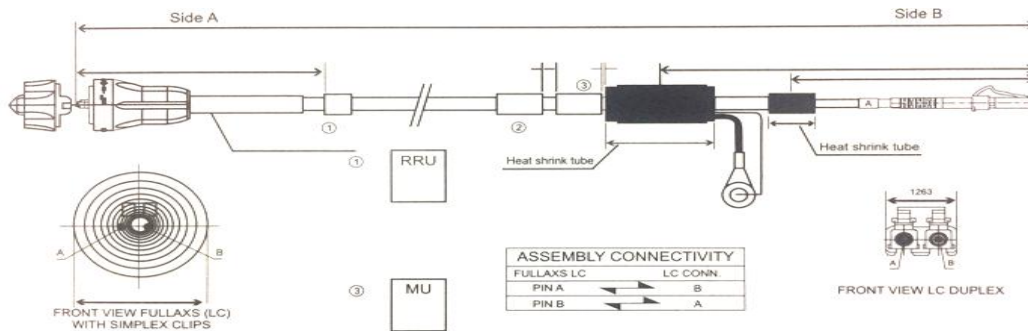


SYNERGY TELECOM PVT.LTD

CPRI Armored Optical Fiber Assembly Outdoor for Ericsson BTS LCPC to LCPC Singlemode Duplex



Description :

- * Ruggedized sealing system for fiber to the antenna and industrial application
- * Open bulkhead for easy access to SFP
- * Positive mechanical feedback to operator when fully mated
- * Duplex LC Interface
- * Robust bayonet locking for easy, fast and secure mating
- * It has good water proof capability. The cable assembly has IP68 protection at grounding joint. Grounding kit protects base station systems against lightning strikes.
- * This Cable assembly is UV protected.

Parts :

Connector	LCPC DX SM
Connector	LCPC DX SM
Cable	8.2MM armored cable , HDPE, Black, Singlemode (G.652D)
Grounding cable	Grounding wire 6sqmm BV Black wire, length 1200mm, contact resistance $\leq 5m\Omega$, copper lug, for 6sqmm cable, Plain washer, spring washer, nut M8 and Bolt M8*20 (material code : SS-304)
Label	Label Stick
Grounding protection	Molding

Optical Data :

CABLE

Fiber	9/125 μ m Optical Fiber
Fiber Count	2 Fibers
Cable Attenuation	≤ 0.4 dB/km @ 1310nm ≤ 0.3 dB/km @ 1550nm

Assembly

Insertion Loss	Max. 0.30 dB @1310nm acc. To IEC 61300-3-4 Method C Max. 0.30 dB @1550nm acc. To IEC 61300-3-4 Method C
Return Loss	Min. 50 dB acc. To IEC 61300-3-6 Method 1

Available variants:

Length available in all the length from 2 mtr to 300 mtr.
Tolerance : ±10CM

Mechanical Data :

Connector

Mating Durability 1000 Cycles

Assembly

Cable-crush Max 1000N/10mm
No broken, $\Delta IL \leq 0.5dB$

FO Cable

Minimum Bending Radius Installation, 160mm
Operation, 80mm
Tensile strength Max 725N
Impact Resistance 5Nm
Torsion ±180°

Cable Construction :



Tight Buffer	Thickness	0.32 MM
	Material	LSZH
	Dia	0.9MM
Inner Sheath	Thickness	0.65±0.05MM
	Material	LSZH
	Dia	4.0±0.2MM
Armored	Material	Steel tape
	thickness	0.21MM
Outer Sheath	Thickness	1.3±0.1MM
	Material	HDPE
	Dia	8.2±0.2MM

Environmental Data :-

Temperature range operation -40°C to 85°C
Temperature range Storage -40°C to 85°C
Temperature range Installation -20°C to +60°C
RoHS (2011/65/EU) Compliant

* Packing as per customer requirements & standard.

This document is the property of SHRIRAM TELELINK. No one is to retain, pass on amend or any types of change in this document.

Format No.	ST/QC/01/00	Rev No. :	00	Issued By:	Amit Khokhar
Issue date	20.01.2018	Rev Date :		Approved By :	Virender Sharma

WZ-47 BUDHELLA VILLAGE, VIKASPURI, NEW DELHI – 110018
PHONE: 011-28533349, MOB: 9810138894/9212558066, FAX: 011-28533349
EMAIL: info@rfconnector.in, WEBSITE: <http://rfconnector.in/>