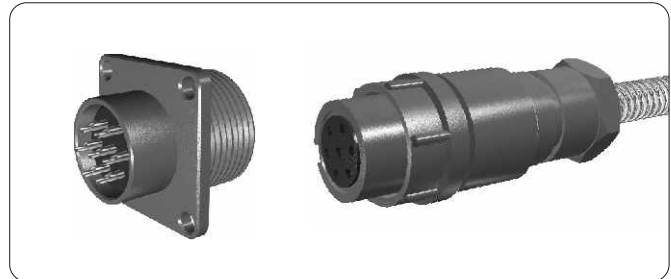


Synergy Telecom P Ltd.

WP16系列防水连接器 Series WP16 water-proof Connector

WP16系列是根据SJ-822标准研制的一种螺纹连接的7芯防水连接器，适用于电子设备和仪器中连接音频电路。

Series FM water-proof connectors are screw coupling connectors with 7 contact pairs developed based on the standard of SJ-822, and can be used to connect audio circuits in electronic equipment and instruments.

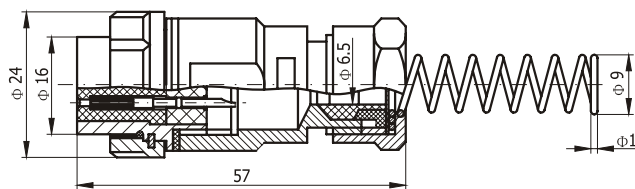


技术特性

TECHNICAL CHARACTERISTICS

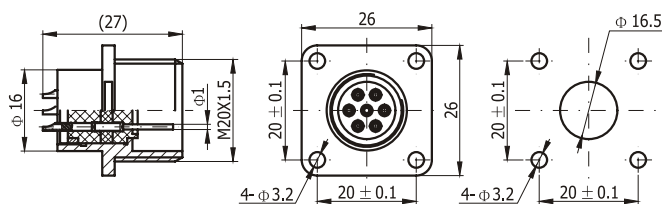
环境条件 Environment			
温度范围 Temperature range	-55℃~+85℃/-67°F~+185°F	相对湿度 Related humidity	在 +40±2℃ 时, 达 90%~95% Up To 90%~95%, at +40±2℃
技术性能 Technical Property			
接触电阻 Contact resistance	≤0.005Ω	绝缘电阻 Insulation resistance	正常条件下, ≥500MΩ; 潮湿试验后, ≥10MΩ ≥500MΩ at normal condition; ≥10MΩ, after humidity test
介质耐压 Dielectric Voltage Withstanding	正常条件下, 1000VAC 1000VAC, at normal condition	防水 Water-proof	1m/30min
机械性能 Mechanical property			
寿命 Durability	500次 500 cycles		

直式电缆用7芯插孔插头
Straight Cable 7Sockets Plug



产品编码 Product NO	产品型号 Product Type	备注 Remarks
WP 104010001	WP16-J7T	

直式面板安装7芯插针插座
Straight Panel 7 pins Receptacle



产品编码 Product NO	产品型号 Product Type	备注 Remarks
WP 114110001	WP16-J7Z	